

**MOBILE HOME SPECIFICATIONS**

**Roof**

Black EPDM on piece rubber roof  
Black Roof Trims / Grey Fascia

**Walls**

70mm thick insulated COMPOSITE WOOD  
External Finish : Dark Grey woodgrain  
Internal finish : White woodgrain

**Corner Posts and Joiners**

Black outside / White inside

**Windows and Doors**

PVC u in Grey woodgrain in & out  
Double Glazed : 4mm Toughened Low E  
glass/argon fill  
Grey Cills

**Floor**

43mm insulated chipboard sub floor  
Laminated finished floor TBC

**Base Frame**

150x45mm C24 timber frame supported on  
concrete posts.  
Room raised off ground level by 200mm,  
with Black skirting scribed all round the  
base.

**Electrics - see quote for full details**

18<sup>th</sup> edition fuse board  
LED downlighters  
White flush double sockets  
White light switches  
All electrics carried out by approved  
contractors, and tested with EIC .

Client CGB  
Job Number Tbc:planning approval stage

Site address Show site

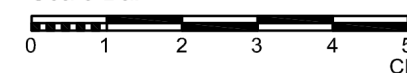
title Mobile Home Annexe Model 4

Approved by : Jason Wilder

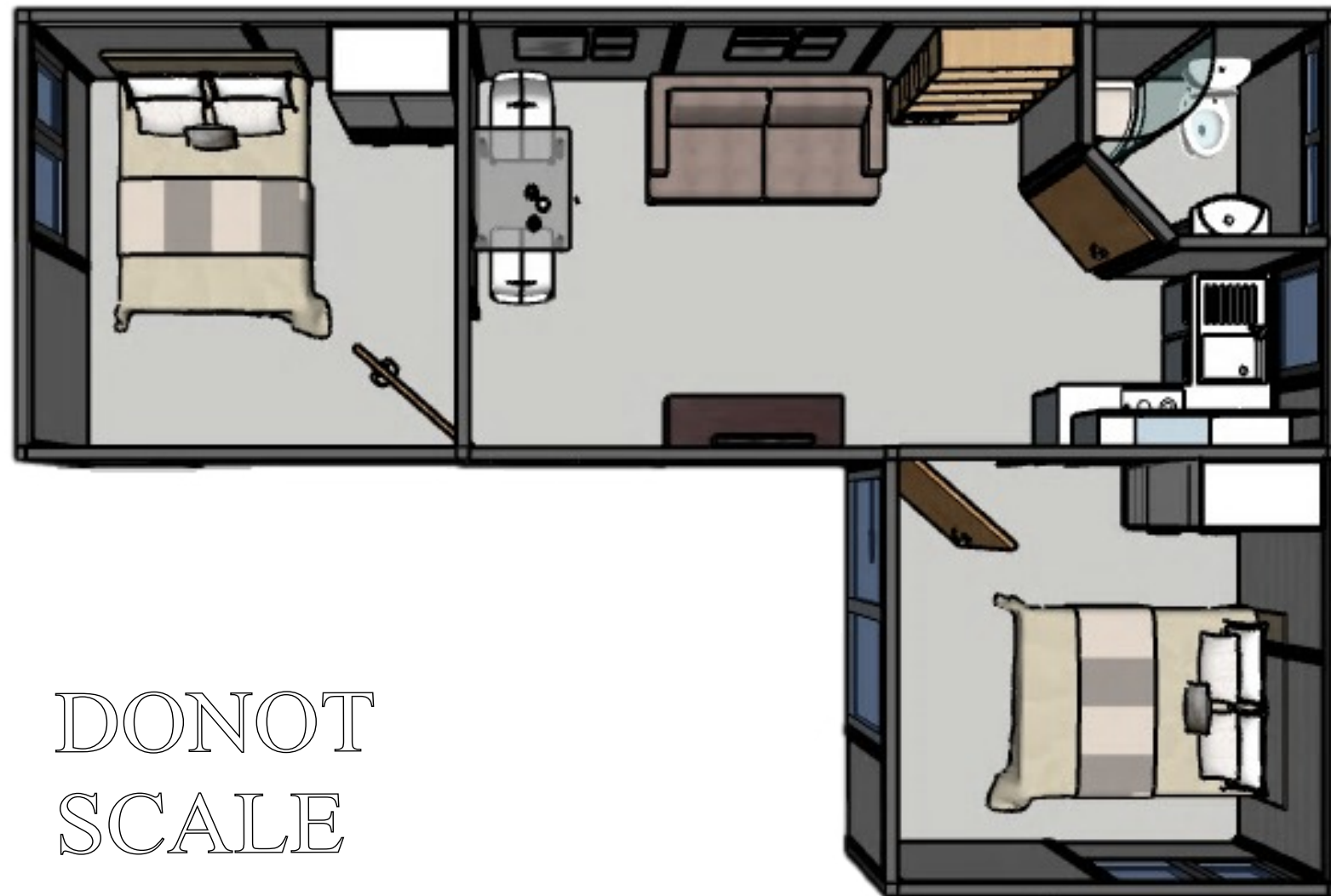
Date :



Scale Bar



Scale	1to50	Dwg. Size	A3
Dwg. No.	9642/	Date	Jan 2024
Dwg by	D Price		



DONOT  
SCALE

**MOBILE HOME SPECIFICATIONS**

**Roof**

Black EPDM on piece rubber roof  
Black Roof Trims / Grey Fascia

**Walls**

70mm thick insulated COMPOSITE WOOD  
External Finish : Dark Grey woodgrain  
Internal finish : White woodgrain

**Corner Posts and Joiners**

Black outside / White inside

**Windows and Doors**

PVC u in Grey woodgrain in & out  
Double Glazed : 4mm Toughened Low E  
glass/argon fill  
Grey Cills

**Floor**

43mm insulated chipboard sub floor  
Laminated finished floor TBC

**Base Frame**

150x45mm C24 timber frame supported on  
concrete posts.  
Room raised off ground level by 200mm,  
with Black skirting scribed all round the  
base.

**Electrics - see quote for full details**

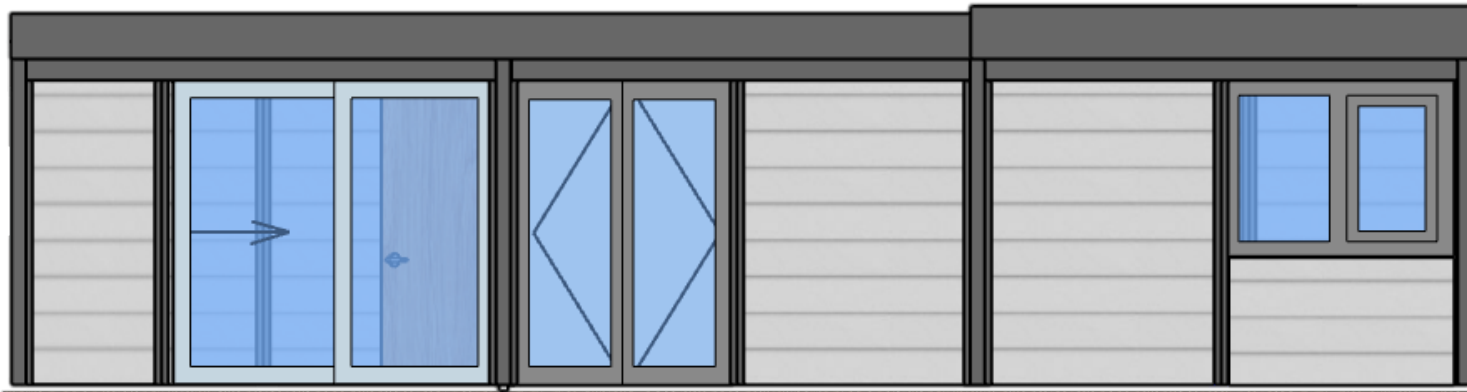
18<sup>th</sup> edition fuse board  
LED downlighters  
White flush double sockets  
White light switches  
All electrics carried out by approved  
contractors, and tested with EIC .

Client	CGB
Job Number	Tbc:planning approval stage
Site address	Show site
title	Mobile Home Annexe Model 4 CONCEPT VIEW
Approved by :	Jason Wilder
Date :	



Scale	1to50	Dwg. Size	A3
Dwg. No.	9642/ 01	Date	Jan 2024
Dwg by	D Price		

Overall Height inc. base: 2660

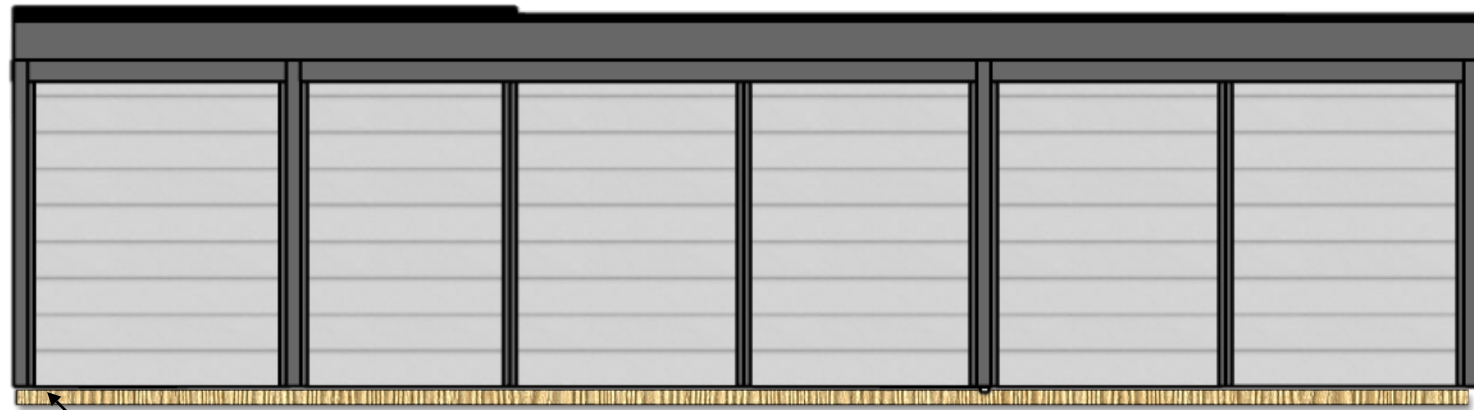


Room Height : rear : 2380

Treated timber joist base

9708

**Proposed Front Elevation**

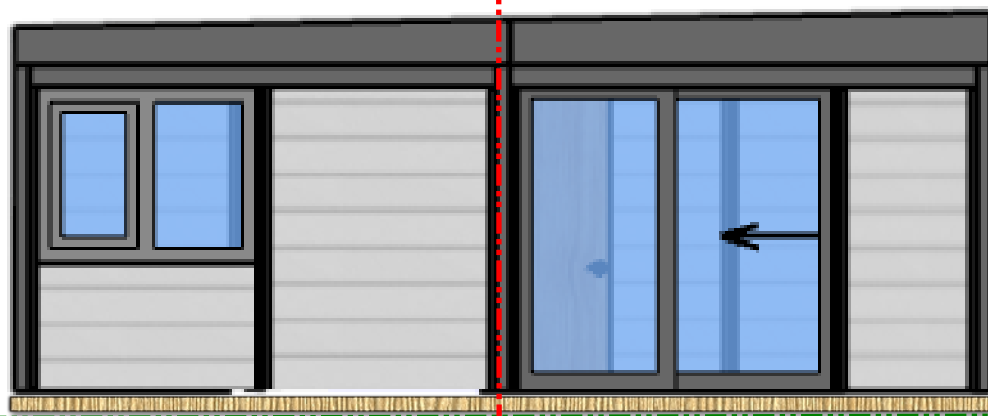


Treated timber joist base

**Proposed Rear Elevation**

Mobile home  
divide/split line for  
both sides

Mobile home  
divide/split line for  
both sides



3322

3193

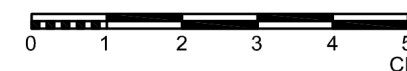
**Proposed Left Side Elevation**



6515

**Proposed Right Side Elevation**

Scale Bar



**MOBILE HOME SPECIFICATIONS**

**Roof**

Black EPDM on piece rubber roof  
Black Roof Trims / Grey Fascia

**Walls**

70mm thick insulated COMPOSITE WOOD  
External Finish : Dark Grey woodgrain  
Internal finish : White woodgrain

**Corner Posts and Joiners**

Black outside / White inside

**Windows and Doors**

PVC u in Grey woodgrain in & out  
Double Glazed : 4mm Toughened Low E  
glass/argon fill  
Grey Cills

**Floor**

43mm insulated chipboard sub floor  
Laminated finished floor TBC

**Base Frame**

150x45mm C24 timber frame supported on  
concrete posts.  
Room raised off ground level by 200mm,  
with Black skirting scribed all round the  
base.

**Electrics - see quote for full details**

18<sup>th</sup> edition fuse board  
LED downlighters  
White flush double sockets  
White light switches  
All electrics carried out by approved  
contractors, and tested with EIC .

Client CGB  
Job Number Tbc:planning approval stage

Site address Show site

title Mobile Home Annexe Model 4  
ELEVATIONS / External sizes

Approved by : Jason Wilder

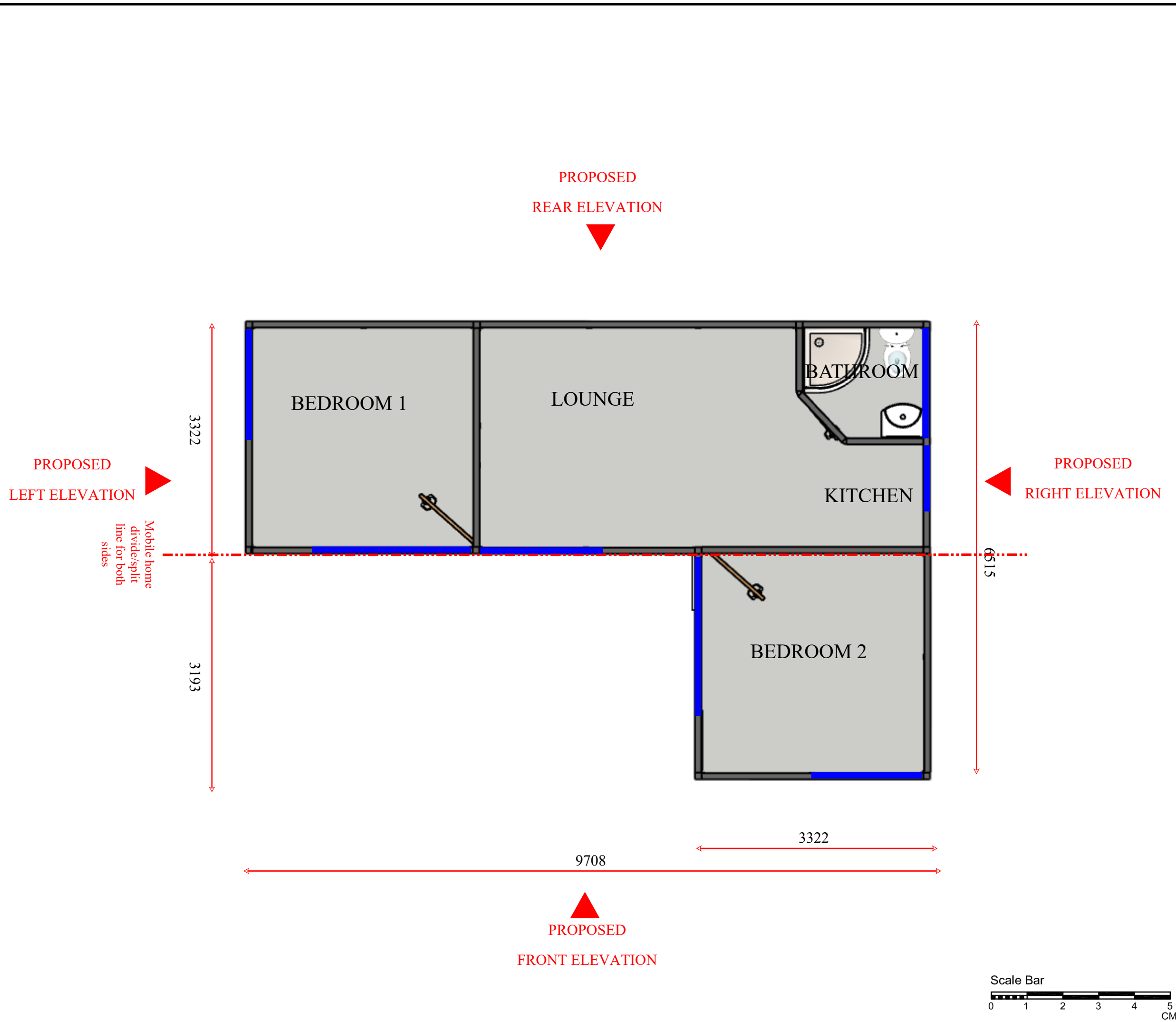
Date :



Scale 1to50 Dwg. Size A3

Dwg. No. 9642/ 02 Date Jan 2024

Dwg by D Price



**MOBILE HOME SPECIFICATIONS**

**Roof**

Black EPDM on piece rubber roof  
Black Roof Trims / Grey Fascia

**Walls**

70mm thick insulated COMPOSITE WOOD  
External Finish : Dark Grey woodgrain  
Internal finish : White woodgrain

**Corner Posts and Joiners**

Black outside / White inside

**Windows and Doors**

PVC u in Grey woodgrain in & out  
Double Glazed : 4mm Toughened Low E glass/argon fill  
Grey Cills

**Floor**


43mm insulated chipboard sub floor  
Laminated finished floor TBC

**Base Frame**

150x45mm C24 timber frame supported on concrete posts.  
Room raised off ground level by 200mm, with Black skirting scribed all round the base.

**Electrics - see quote for full details**

18<sup>th</sup> edition fuse board  
LED downlighters  
White flush double sockets  
White light switches  
All electrics carried out by approved contractors, and tested with EIC .

Client	CGB		
Job Number	Tbc:planning approval stage		
Site address	Show site		
title	Mobile Home Annexe Model 4 FLOOR PLAN/External sizes		
Approved by :	Jason Wilder		
Date :			
			
Scale	1to50	Dwg. Size	A3
Dwg. No.	9642/ 03	Date	Jan 2024
Dwg by	D Price		